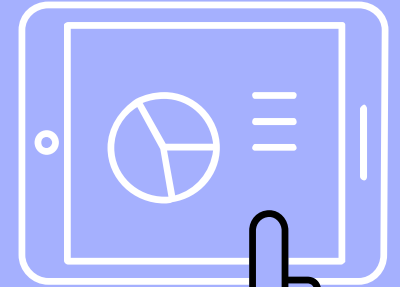
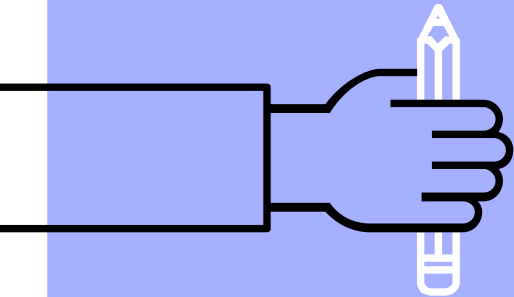
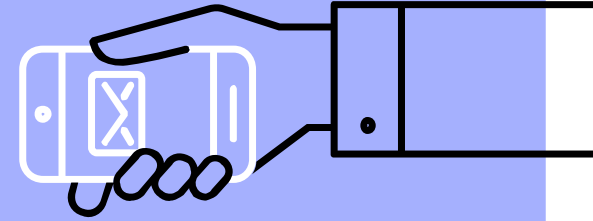
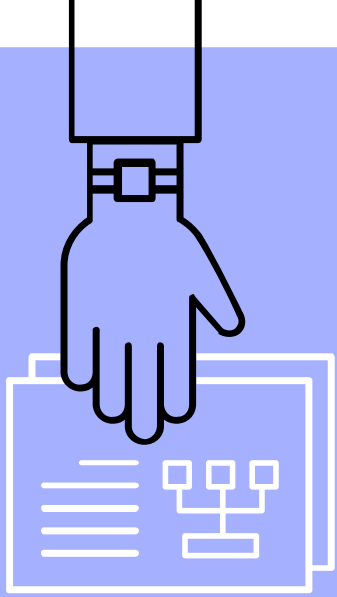


Reimagining Student-Centered Reference Services





The Research Assistance Functional Team (RAFT)

Annie Pho

Powell Library

Antonia Osuna-Garcia

Biomed Library

Diana King

Arts Library

Miki Goral

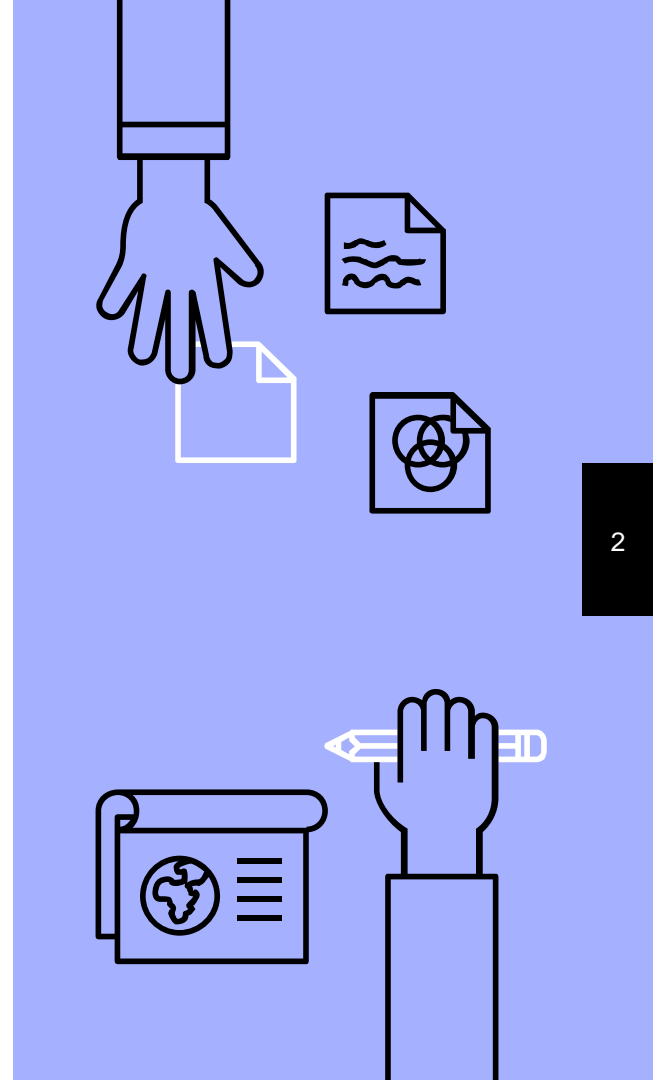
Powell Library

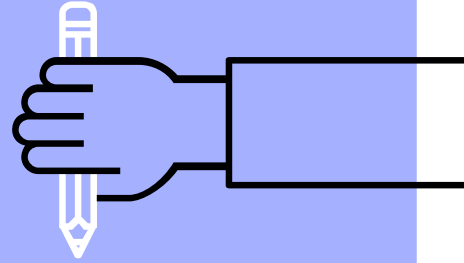
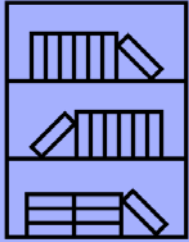
Sylvia Page

Powell Library

Wynn Tranfield

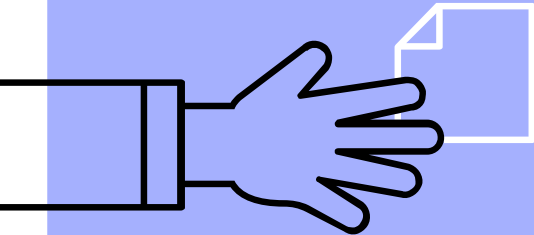
**Biomed/Science + Engineering
Library**





1.

Background





Research Library (Charles E. Young)
Department of Special Collections
Room A1713
Performing Arts Special Collections
East Asian Library (Richard C. Rudolph)
Room 21617
University Archives
Room 21560

UCLA Lab School
Gonda Family Library
1017 UCLA Lab School

Management Library (Eugene and Maxine Rosenfeld)
Rosenfeld Library Building
E301 Anderson Complex

Arts Library
1400 Public Affairs Building

Law Library (Hugh and Hazel Darling)
1112 Law Building

Powell Library Building
College Library
Reprographic Service
330 Powell Library Building

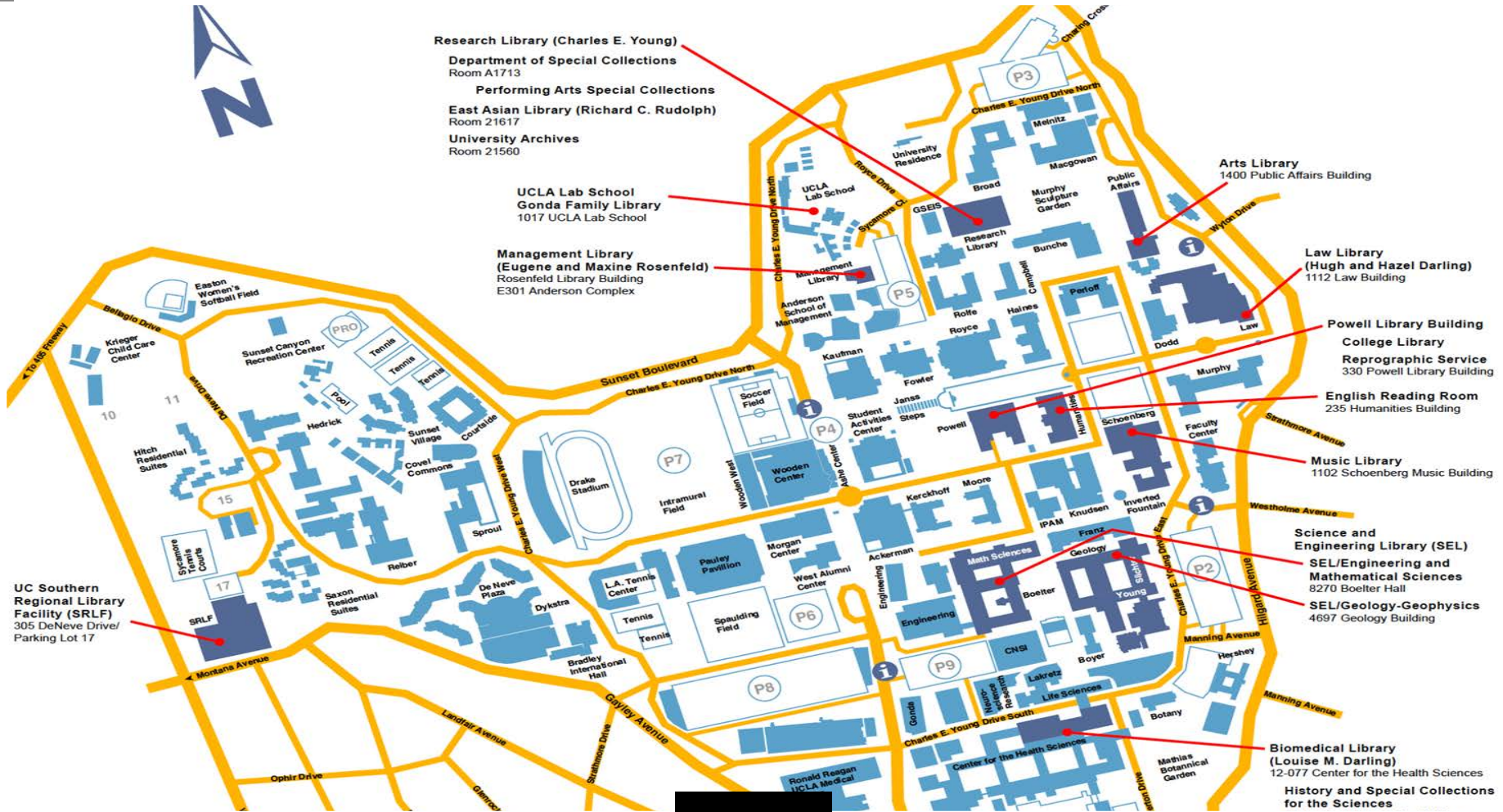
English Reading Room
235 Humanities Building

Music Library
1102 Schoenberg Music Building

Science and Engineering Library (SEL)
SEL/Engineering and Mathematical Sciences
8270 Boelter Hall
SEL/Geology-Geophysics
4697 Geology Building

Biomedical Library (Louise M. Darling)
12-077 Center for the Health Sciences
History and Special Collections for the Sciences

UC Southern Regional Library Facility (SRLF)
305 DeNeve Drive/
Parking Lot 17



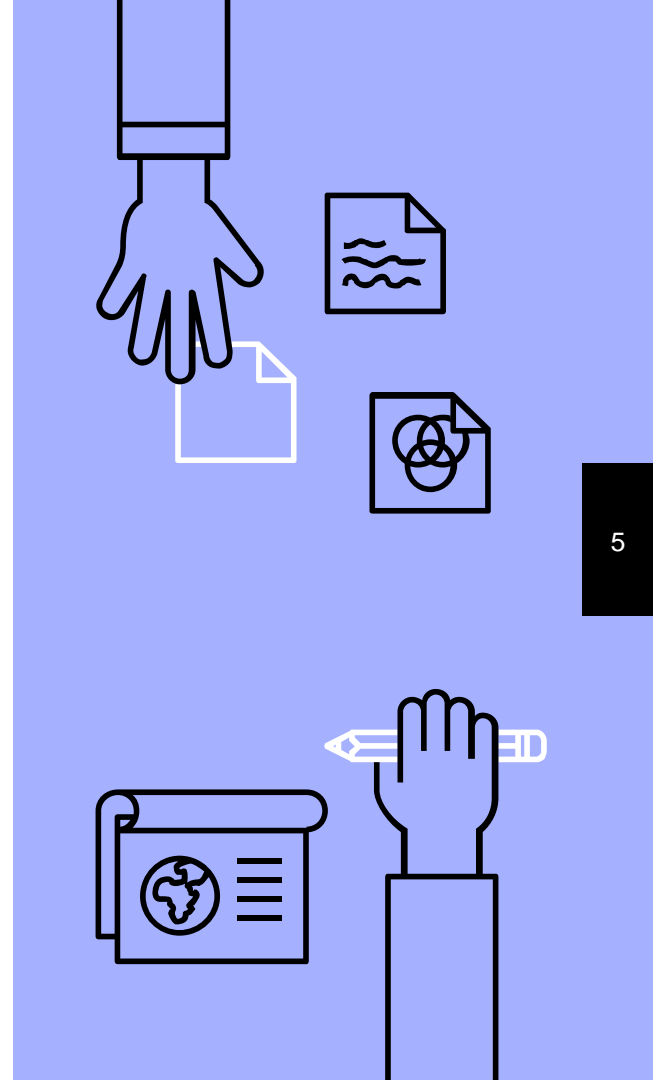


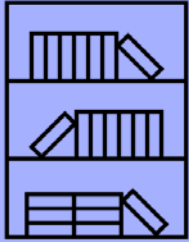
Background

Environmental Scan of each library

- ▶ Hiring
- ▶ Training model
- ▶ Space
- ▶ Stats/Trends

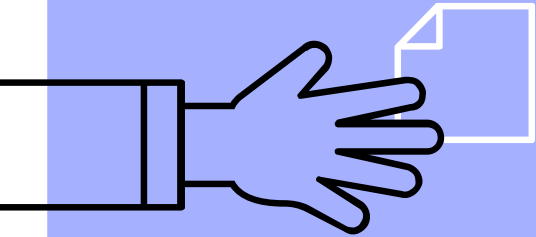
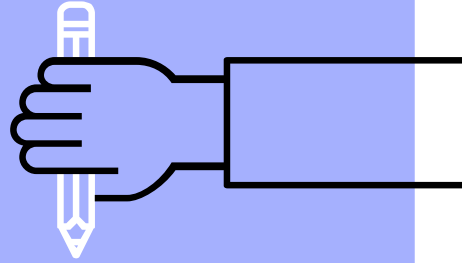
RAFT “Open Mic”





2.

What we
wanted to fix

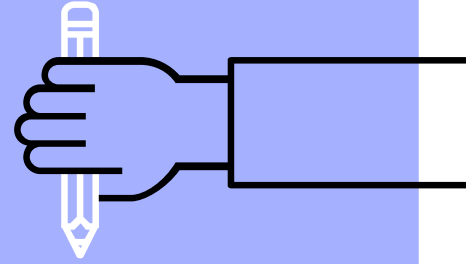
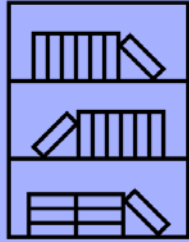




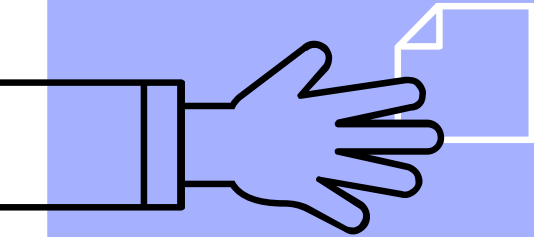
Goals

- ▶ Cohesive training program
- ▶ Better applicant pool
- ▶ Amazing mentorship opportunities for students





3. Methods





Methods





Create new
training
curriculum

7-week training curriculum

Combines in-person training with online asynchronous
modules serving training outcomes

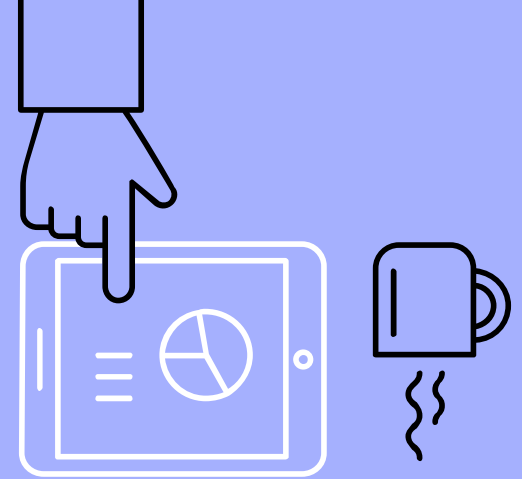


Create new
training
curriculum

Student Training Revamp

Core Learning Outcomes:

- Research consultations
- Developing Research Questions
- Library Policies
- Subject-specific databases
- Special Collections nuances

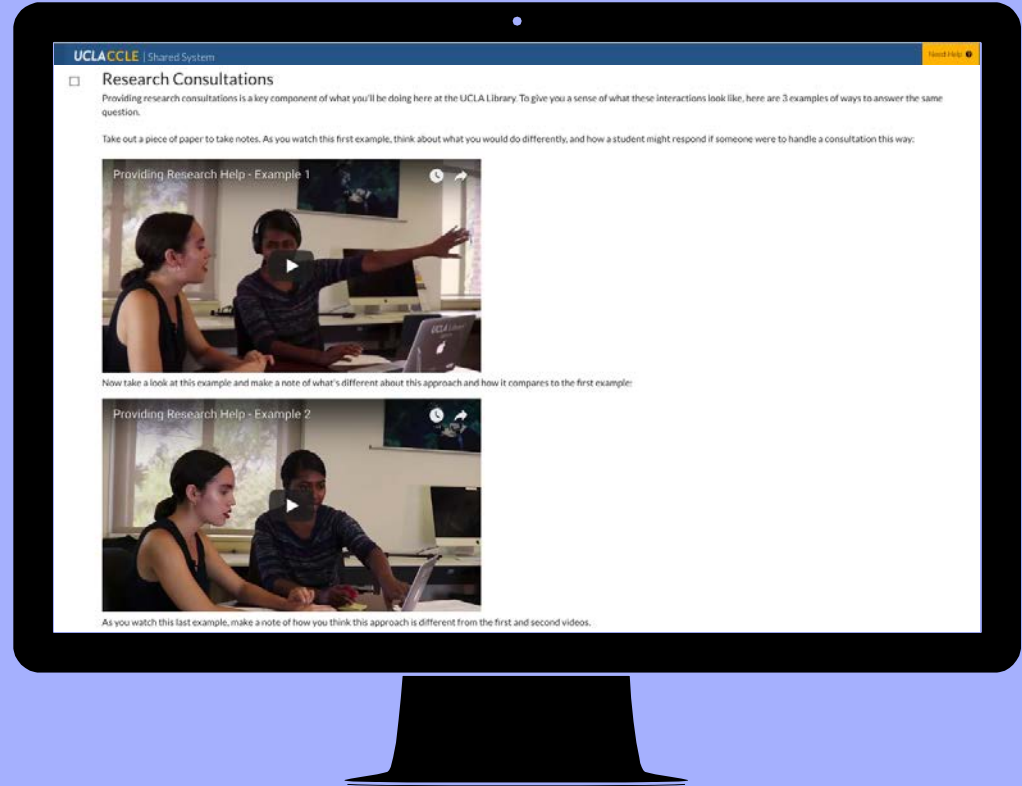


Create new
training
curriculum

Online Modules

Interactive,
multimedia interfaces
created by student-
led ID team

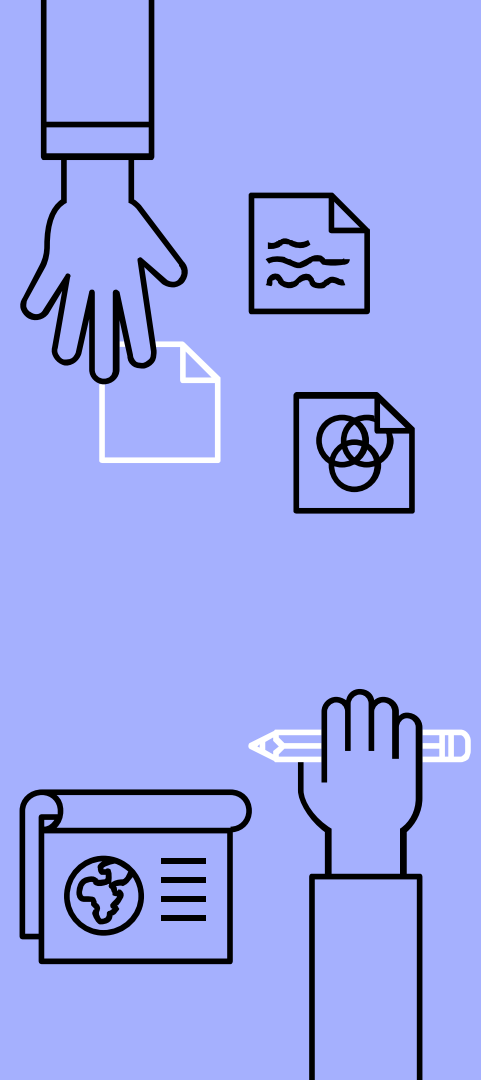
Check them out:
bit.ly/RAFTvids

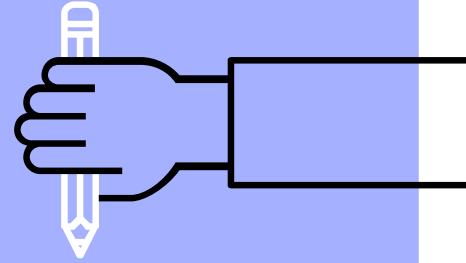
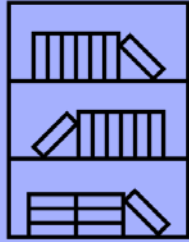


Where can we add value?

Why should students invest in this work?

- ▶ For MLIS→
 - Professional experience
 - Teaching experience
 - Added responsibility
- ▶ General Customer service

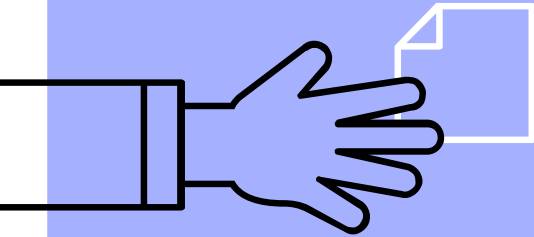




4.

Results

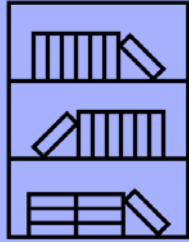
(preliminary)





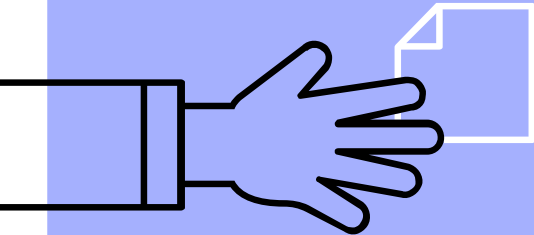
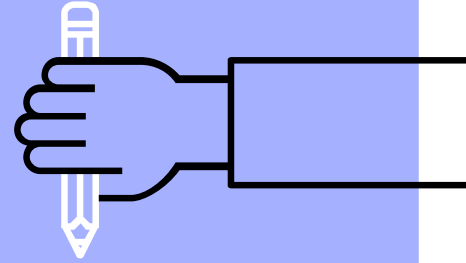
- ▶ Increased leadership investment in student workers
- ▶ Wide lens = juncture for reflection
- ▶ Strengthen bonds between departments





5.

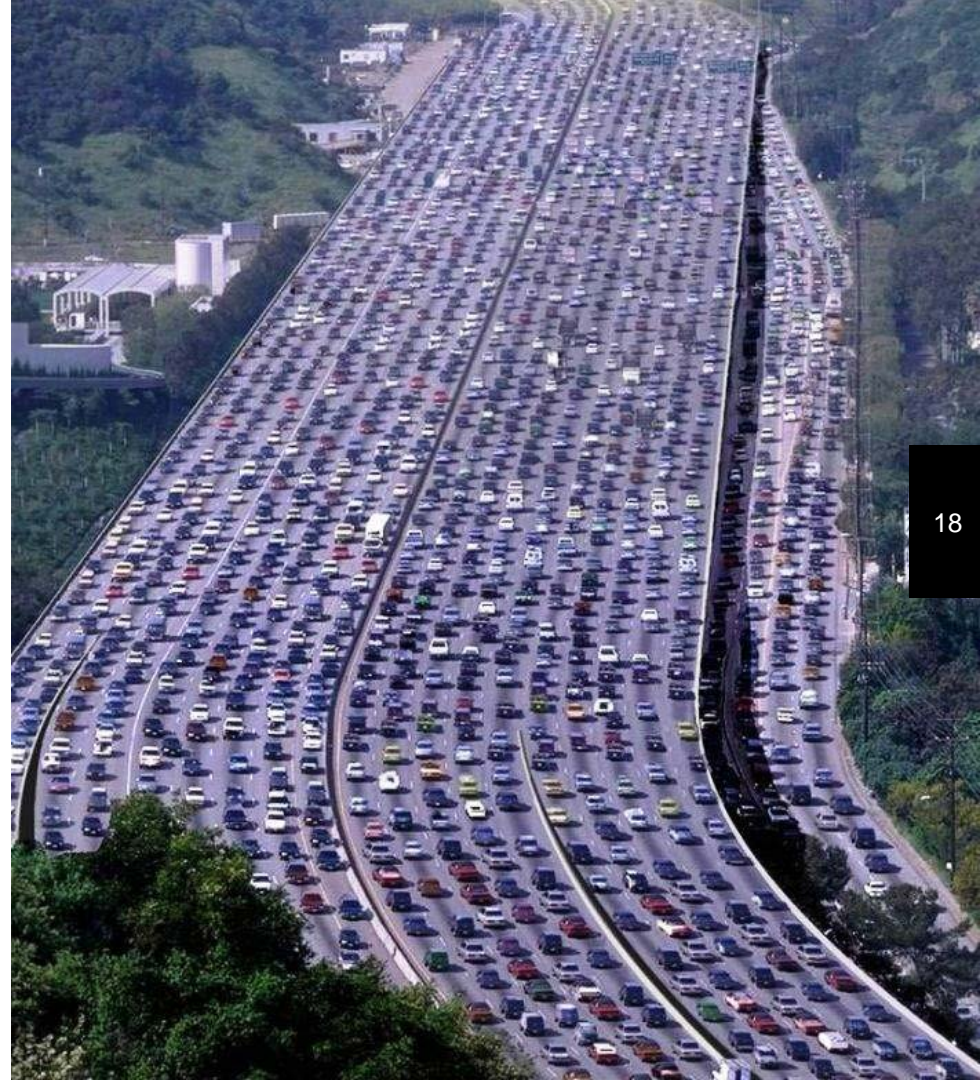
Discussion + Next Steps





Challenges:

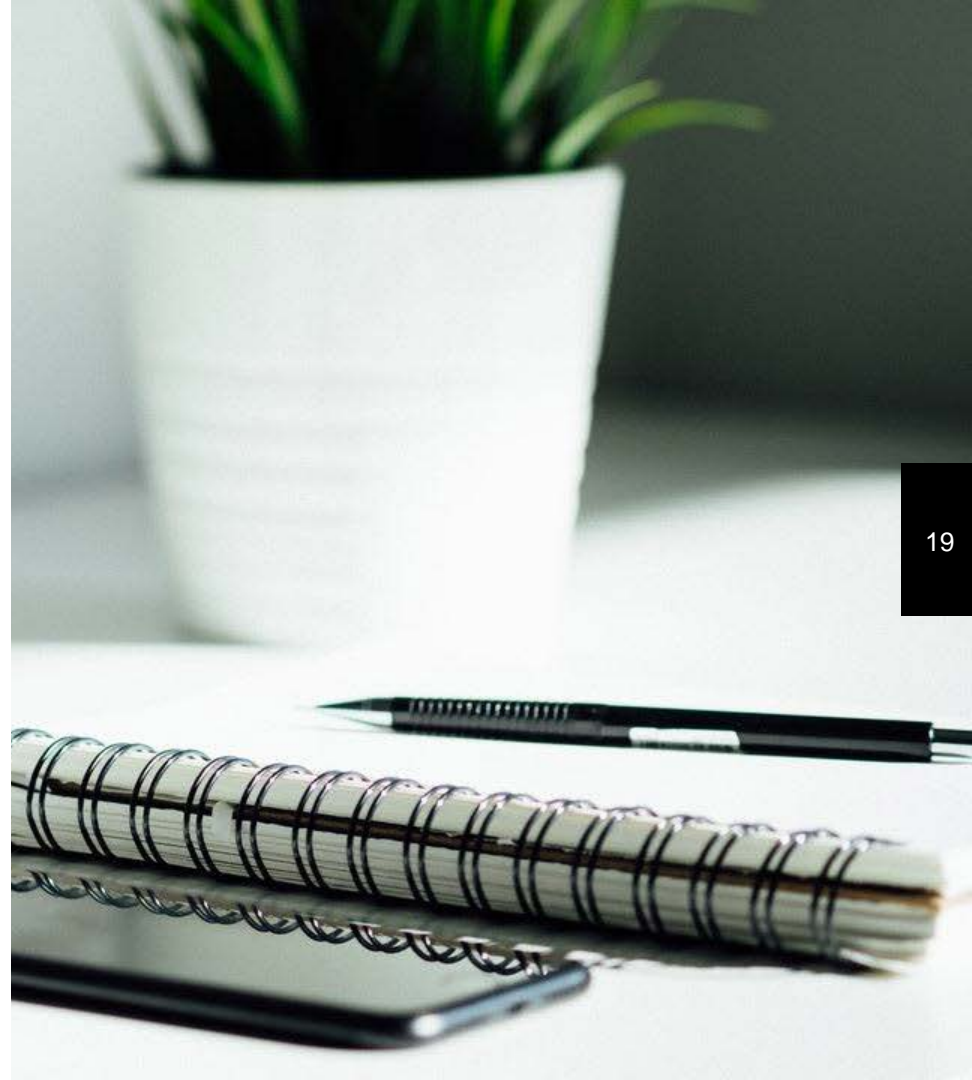
- ▶ Balancing core knowledge and discipline-specific library locations
- ▶ Communication between stakeholders
- ▶ Differences in collaboration style





Next Steps:

- ▶ Fold in other functional areas: Teaching + Learning, Outreach, Collections, & Research Partnerships
- ▶ Combined student budgets



THANKS!

Any questions?



Extra shout out to:

Alicia Reiley

Marisa MendezBrady

Jade Alburo

Nicollette Brant

Laura Jara

Janine Henri

Matthew Vest

Allison Benedetti

Alana Enriquez

Gavin Jackson

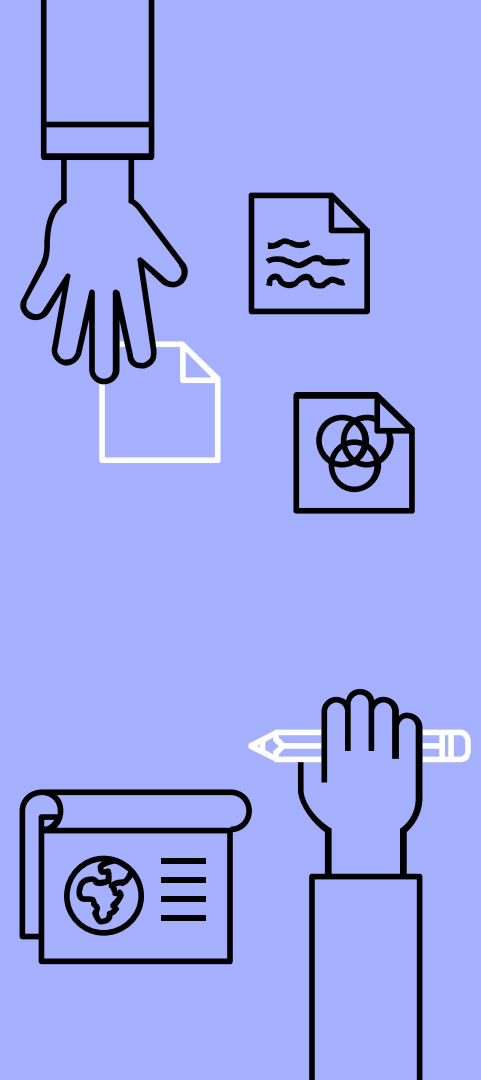
Renee Romero

Kian Ravaei

Juan Díaz

Jen Pierre

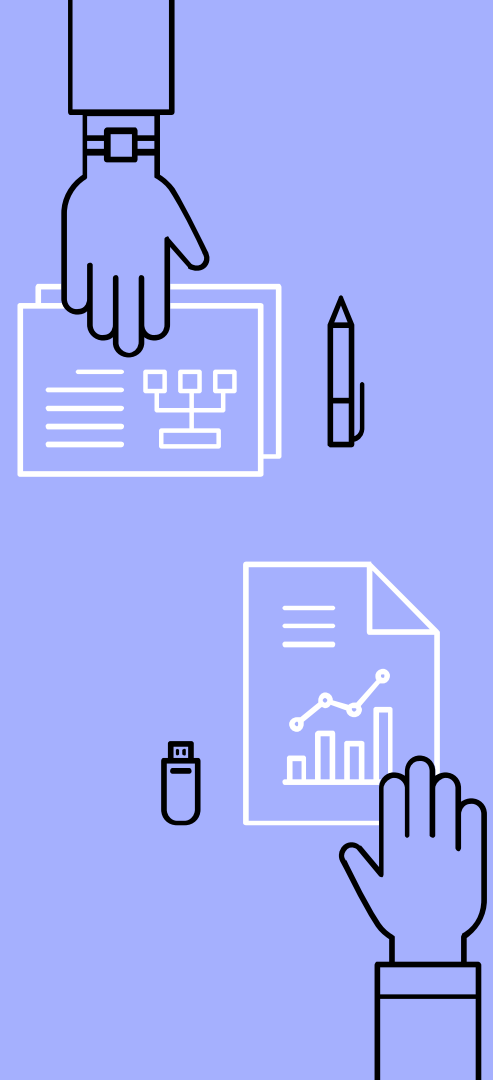
Doug Worsham



CREDITS

Special thanks to all the people who made and released these awesome resources for free:

- ▶ Presentation template by [SlidesCarnival](#)
- ▶ Photographs by [Unsplash](#)



PRESENTATION DESIGN

This presentation uses the following typographies and colors:

- Titles: Miriam Libre
- Body copy: Barlow Light

You can download the fonts on these pages:

<https://github.com/MichalSahar/Miriam-Libre/tree/master/fonts/otf>

<https://www.fontsquirrel.com/fonts/barlow>

Indigo #a5b0fe

You don't need to keep this slide in your presentation. It's only here to serve you as a design guide if you need to create new slides or download the fonts to edit the presentation in PowerPoint®

